

GX Integrated System

“False Ceiling, Lighting, Air Conditioning, Roller Blinds, Walls, Raised Floor “



Products Index

False Ceiling GX series



Lighting GXL



Air Conditioning



Walls GX1-GX2-GX3



Rolling Blinds GXR

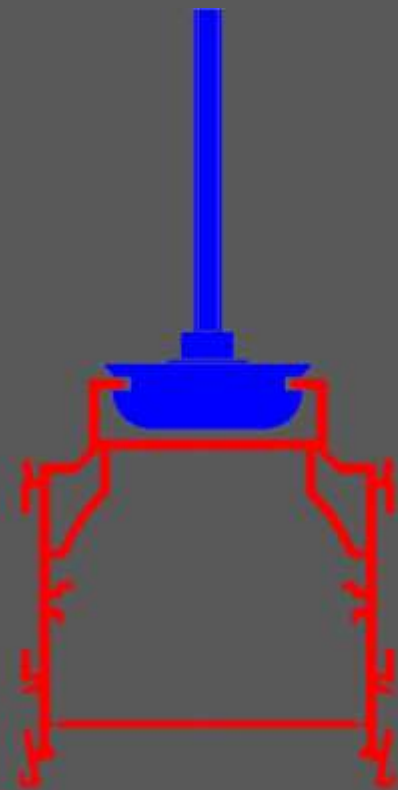


Raised Floor GXFloor



1. False Ceiling GX

1.1 Multifunctions Bandraster “DNA” of the integrated system



VS10



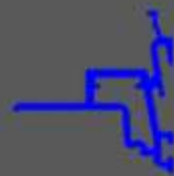
ACV1



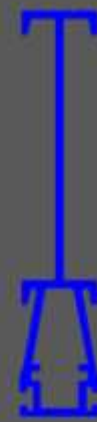
ACV2



ACV3



ACV4



ACV10

Ceiling accessories:

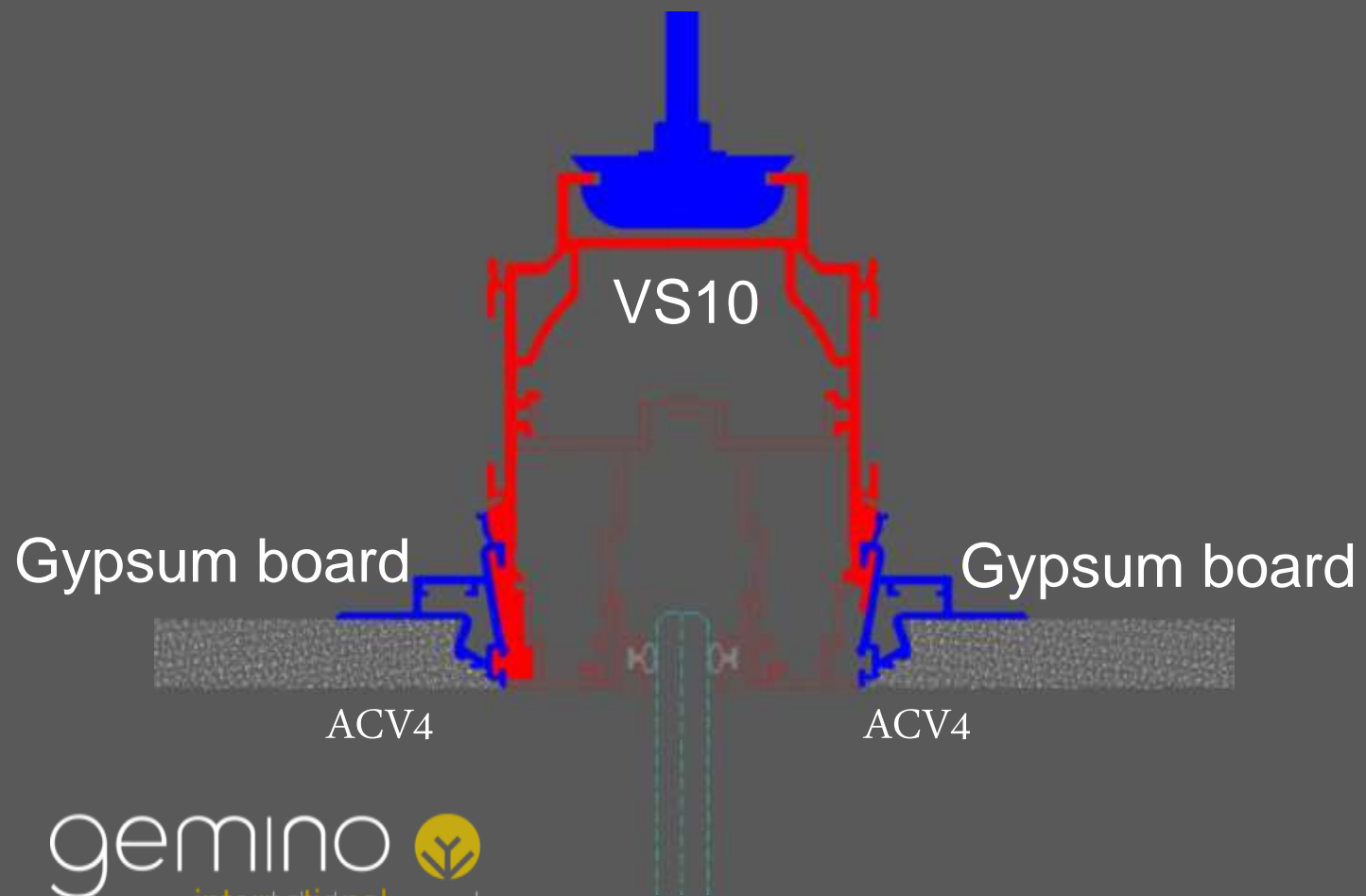
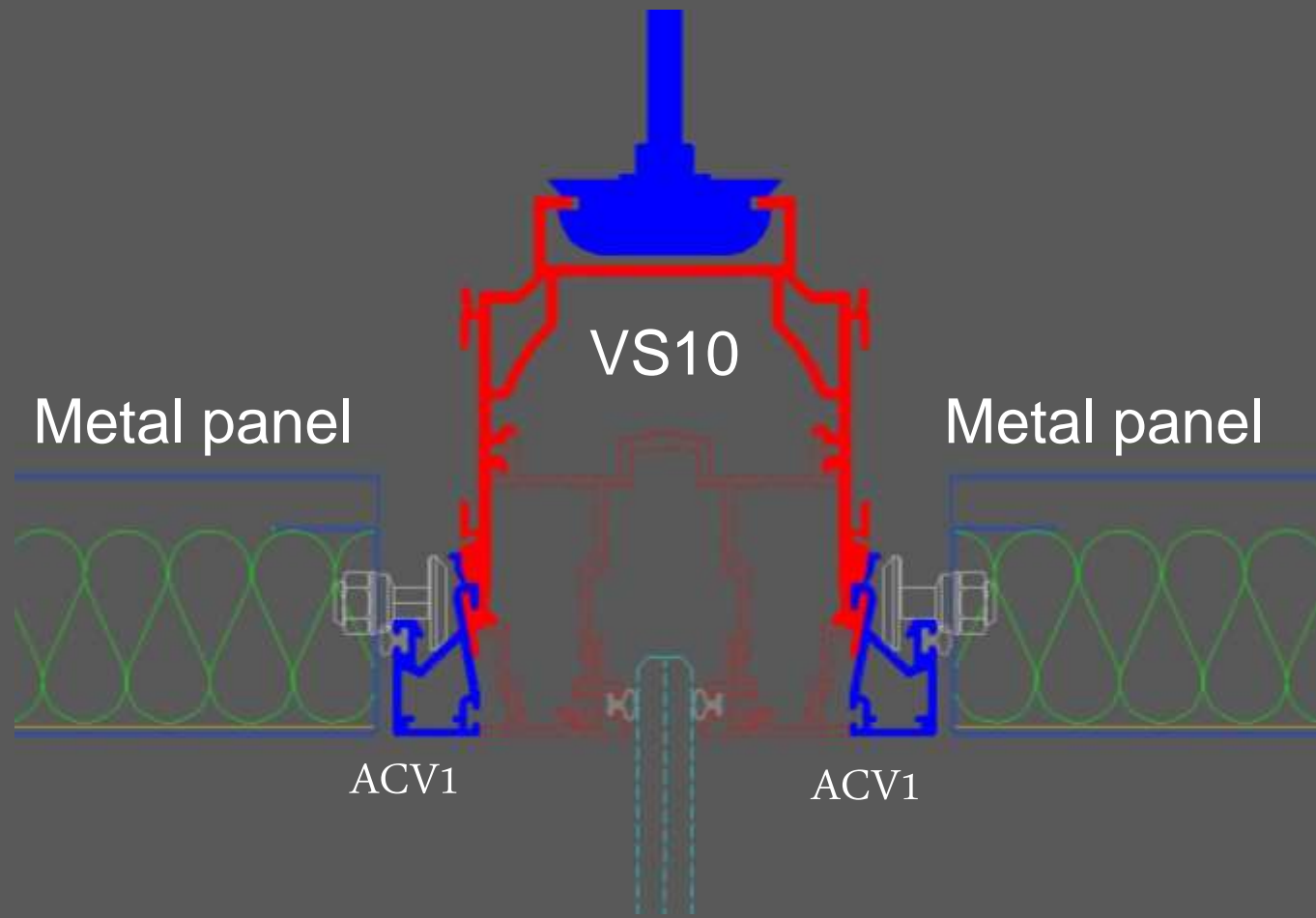
- VS10 Multifunction Bandraster.
- ACV1 Accessory for openable metal panels.
- ACV2 Accessory for ‘loose laid’ panels
- ACV3 Accessory for gypsum vertical barriers
- ACV4 Accessory for flush gypsum ceilings
- ACV10 Accessory for additional multifunction top track.



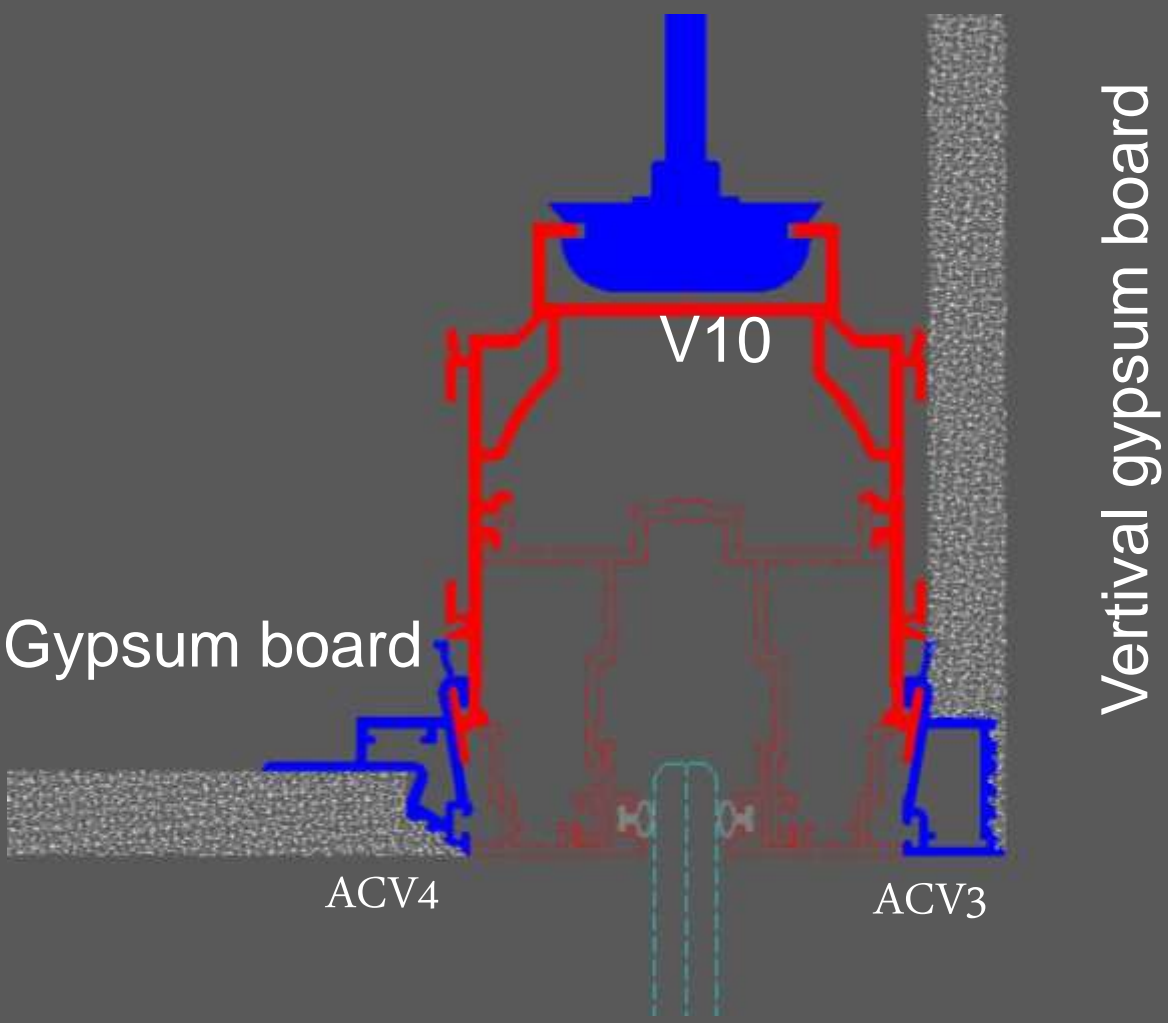
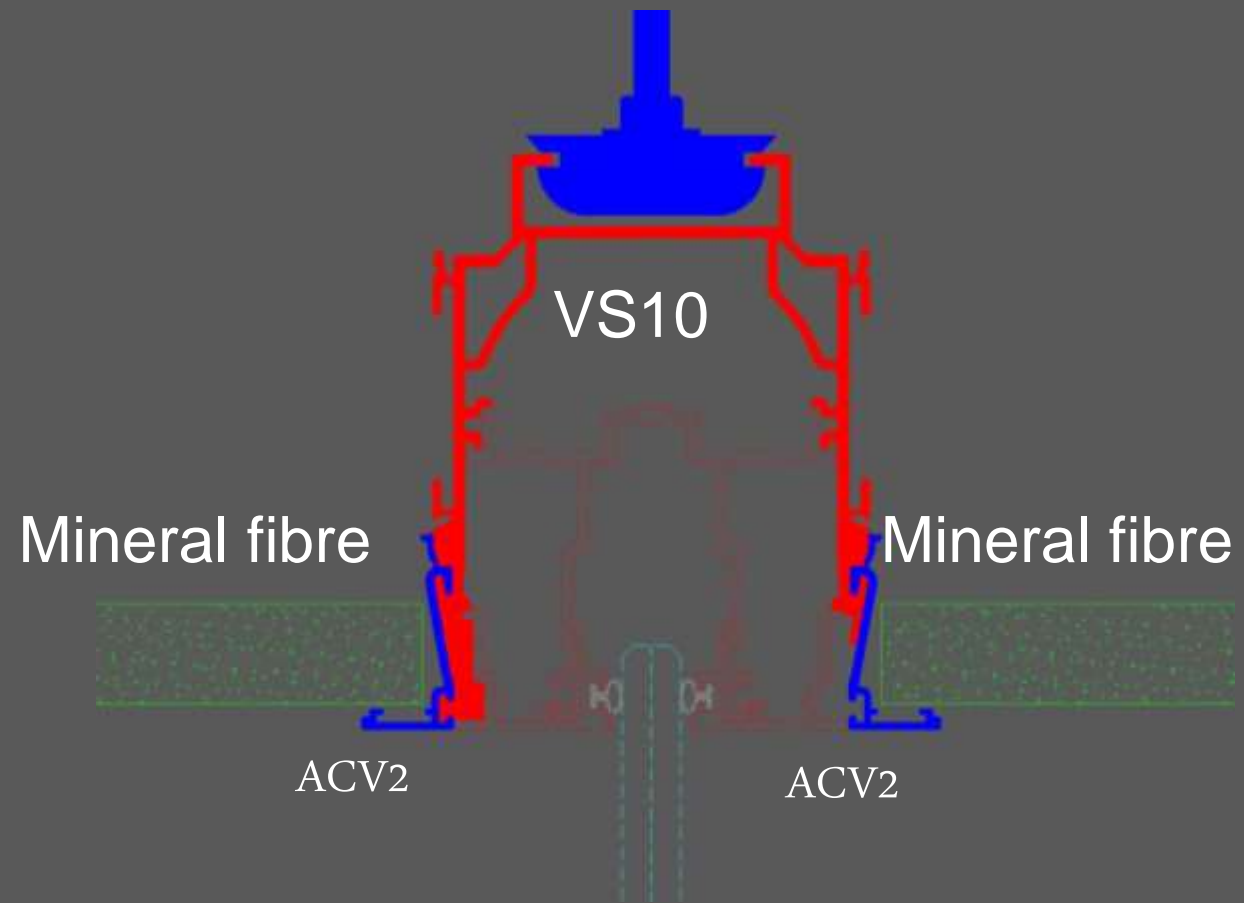
Example of grid with multifunction top track



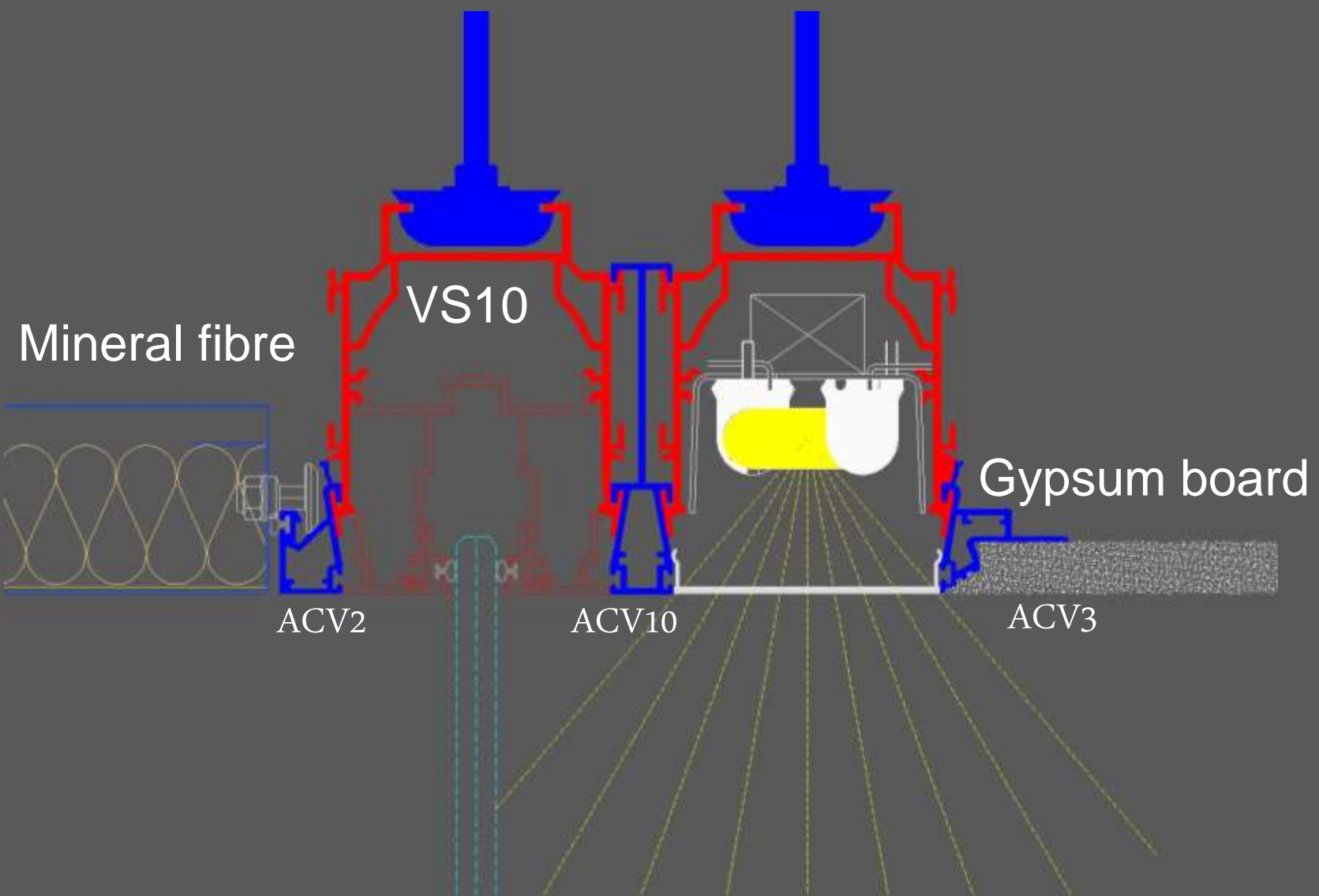
Bandraster with accessories for metal panels and gypsum,



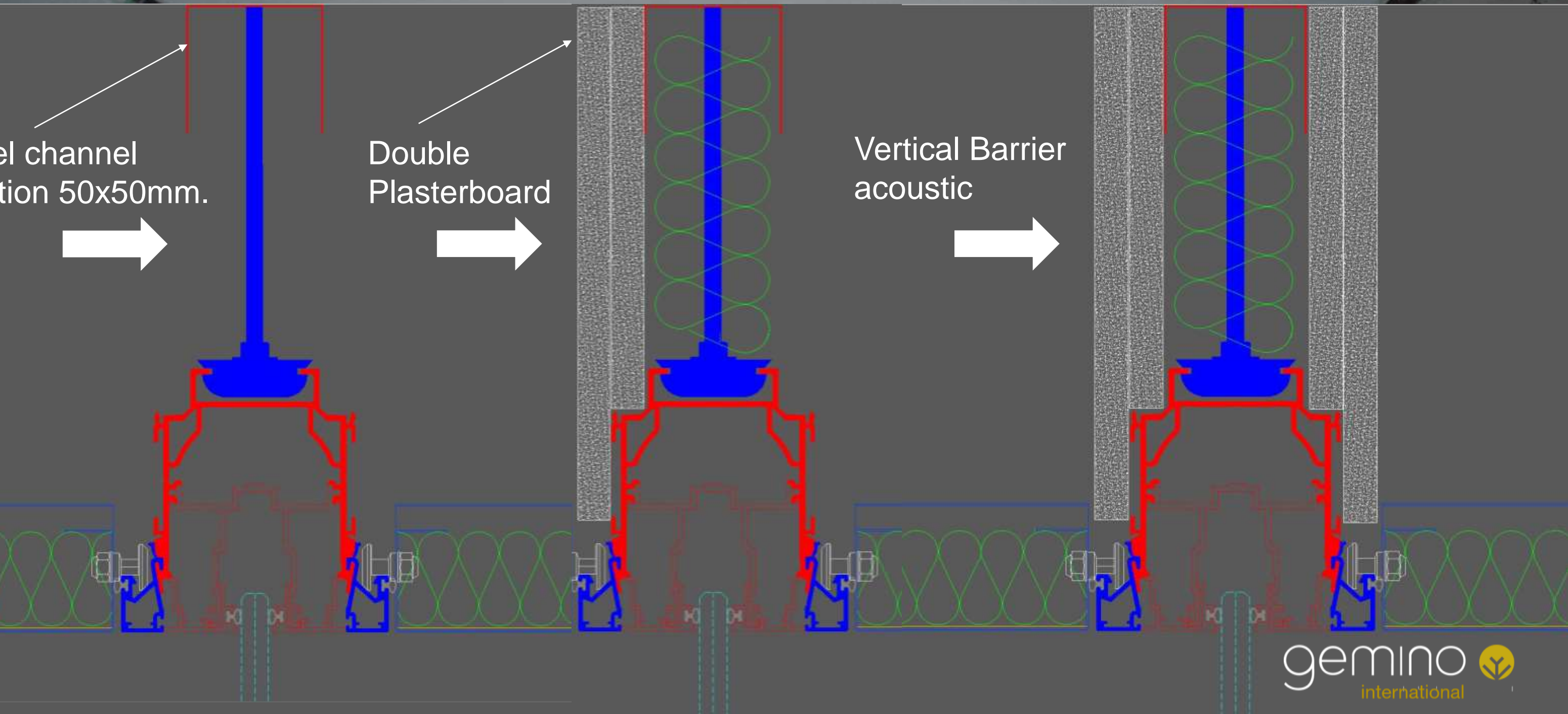
Bandraster with accessories for mineral fibre and gypsum boards



Bandraster with accessories for mineral fibre and gypsum



Bandrastrer with Vertical Barrier Acoustic



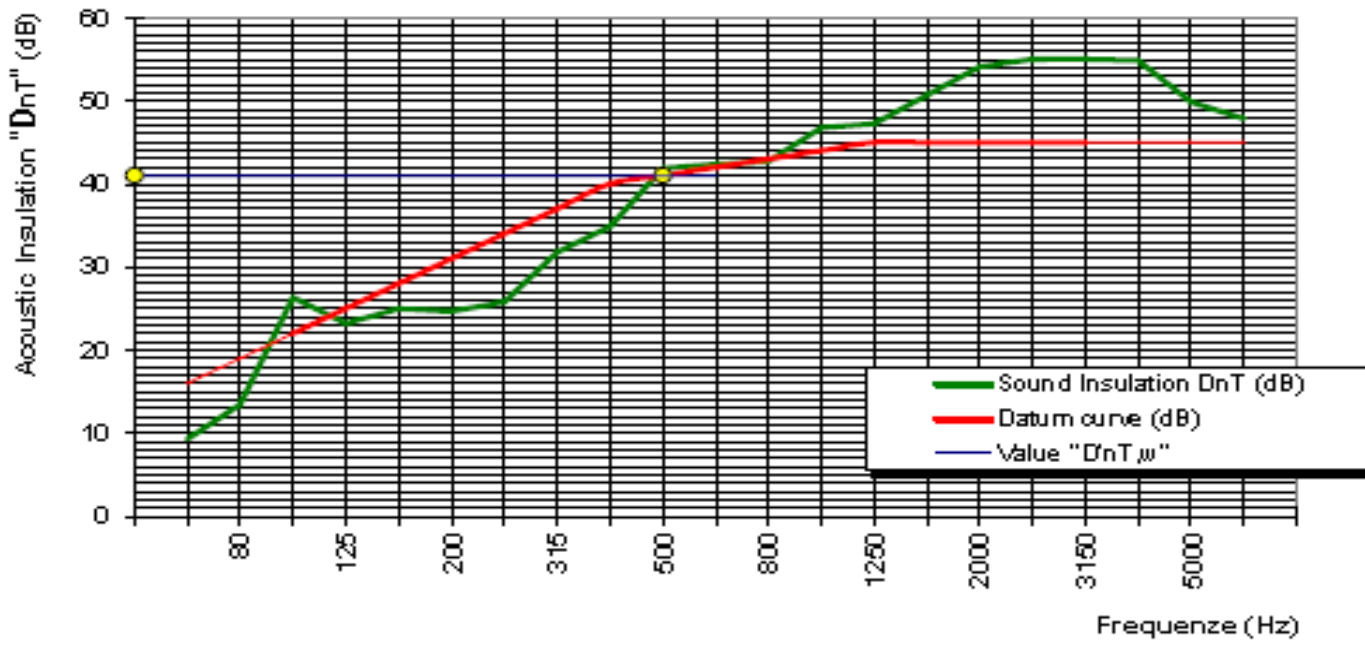
Acoustic test GX2 double glazed wall on Top Trak with Vertical barrier acoustic : RW= 41dB

gemino international s.r.l.
 Test evaluation of acoustic insulation of glass partitions on site at Tetra Pak spa (MO) Italy
 Partitions with double laminated glass 6.6.2 with acoustic double PVB layer without pivot door
 Partitions thickness 70mm. Mock up created with raised floor, false ceiling with top track and vertical barrier
 plastboard

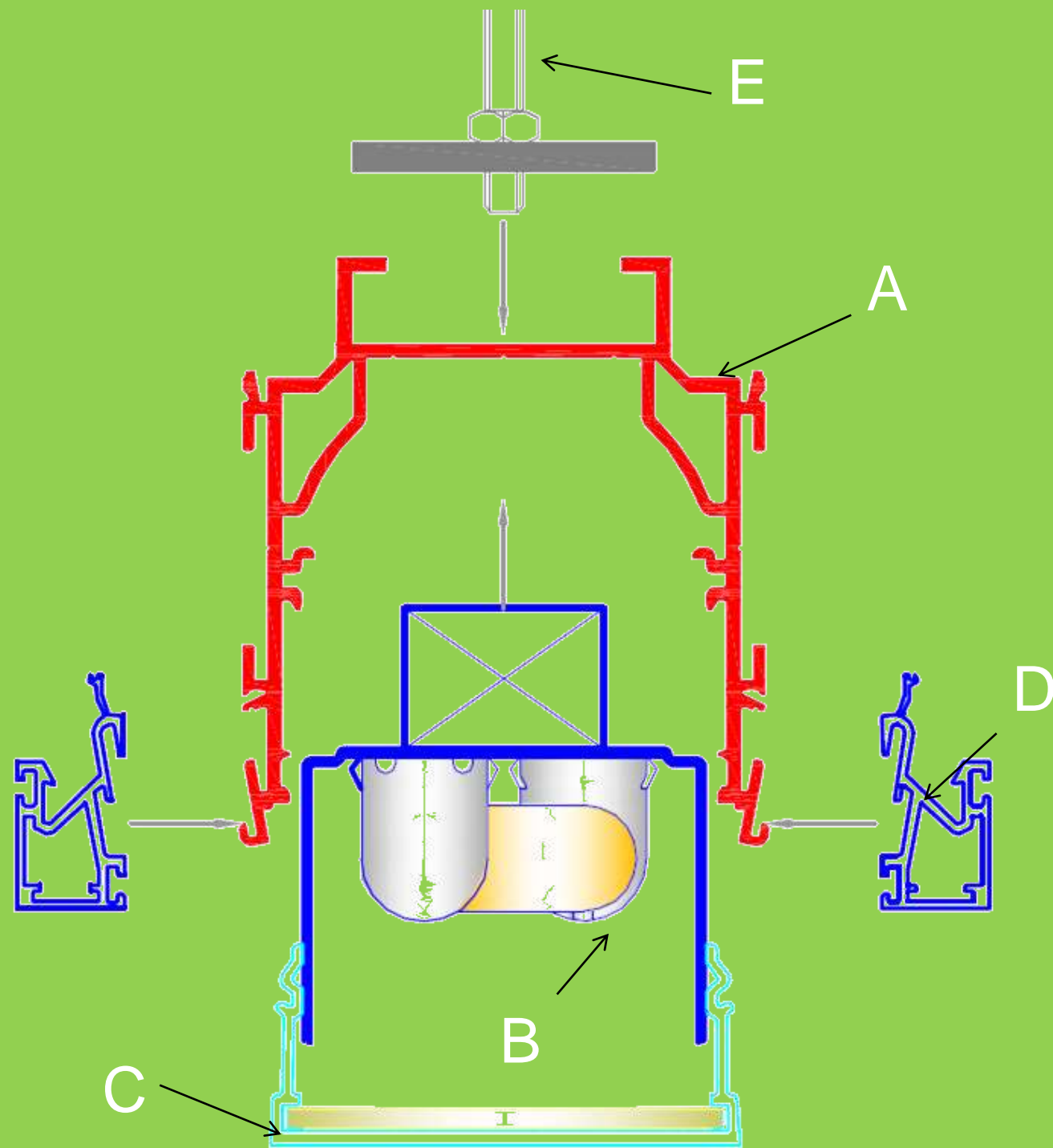
Frequenze Hz	Lp emittis Le (dB)	receptor Lr (dB)	Reverberation Time Tru. (s)	Sound insulation DnT (dB)	Datum curve (dB)	Scrap (dB)	Negative scrap (dB)	Value D'nT,w (dB)
63	69,0	61,9	0,83	9,3	16,0	-6,73		
80	62,1	52,2	1,13	13,4	19,0	-5,57		
100	69,2	46,4	1,13	26,3	22,0	4,34		
125	72,0	52,9	1,29	23,2	25,0	-1,80	-1,80	
160	74,9	52,8	0,98	25,0	28,0	-3,00	-3,00	
200	71,0	48,7	0,86	24,7	31,0	-6,34	-6,34	
250	74,3	49,4	0,61	25,8	34,0	-8,21	-8,21	
315	76,2	45,0	0,57	31,8	37,0	-5,21	-5,21	
400	74,9	41,2	0,65	34,9	40,0	-5,15	-5,15	
500	79,4	39,3	0,75	41,9	41,0	0,86		41,0
630	82,5	42,0	0,77	42,4	42,0	0,38		
800	78,3	36,9	0,68	42,7	43,0	-0,29	-0,29	
1000	77,3	32,3	0,75	46,8	44,0	2,78		
1250	75,2	30,8	0,96	47,2	45,0	2,25		
1600	72,2	25,2	1,17	50,7	45,0	5,70		
2000	70,5	20,6	1,32	54,1	45,0	9,11		
2500	72,0	21,2	1,32	55,0	45,0	10,02		
3150	72,2	21,2	1,26	55,0	45,0	10,03		
4000	69,2	18,0	1,17	54,9	45,0	9,88		
5000	65,1	18,2	0,99	49,9	45,0	4,87		
6300	58,7	12,8	0,79	47,9	45,0	2,87		

C = -2 Negative deviations sum (freq. 100 - 3.150 Hz) -30,00
 Ctr = -7 Average negative deviations 1,87

ACOUSTIC INSULATION CHART



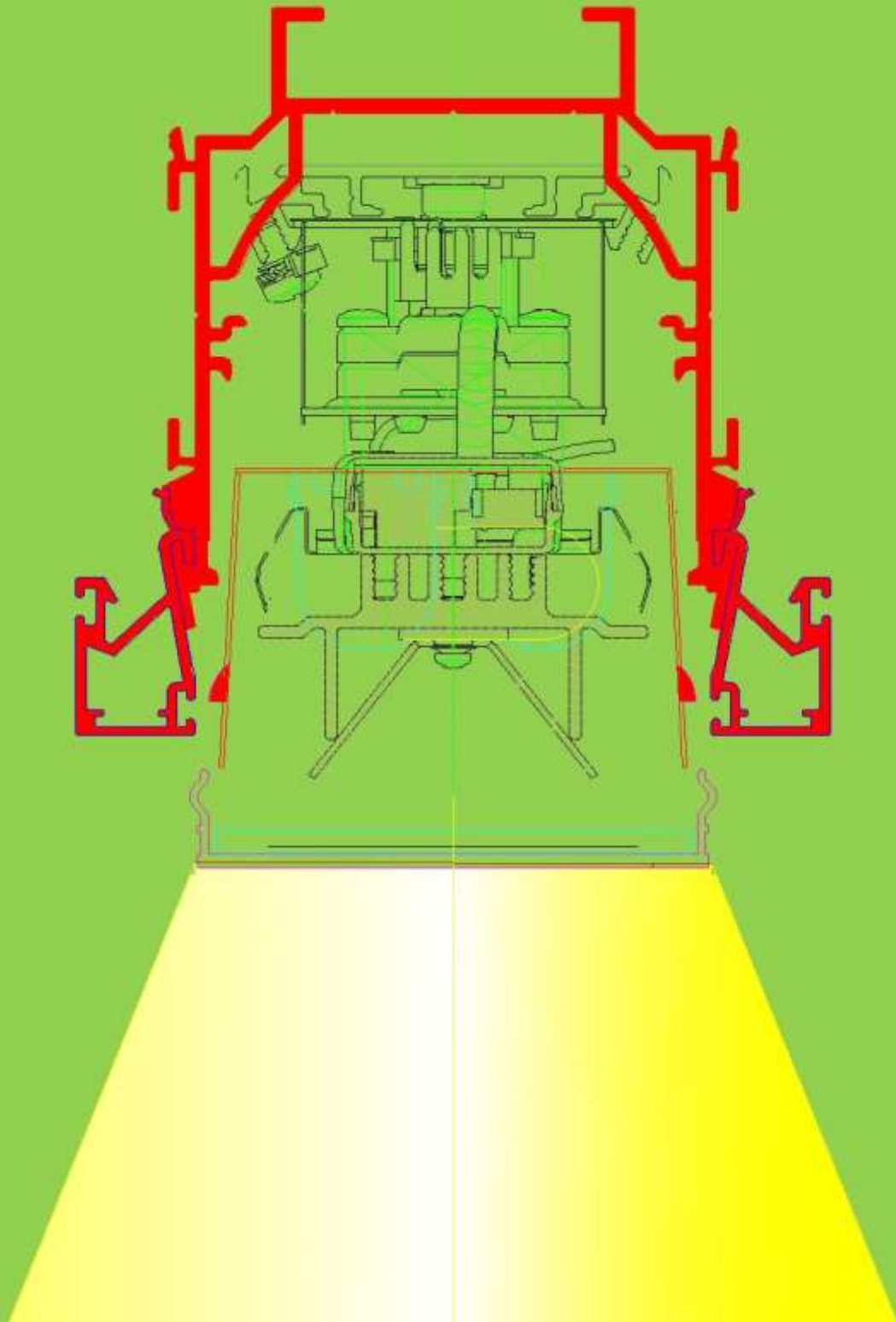
2. GXL lighting system



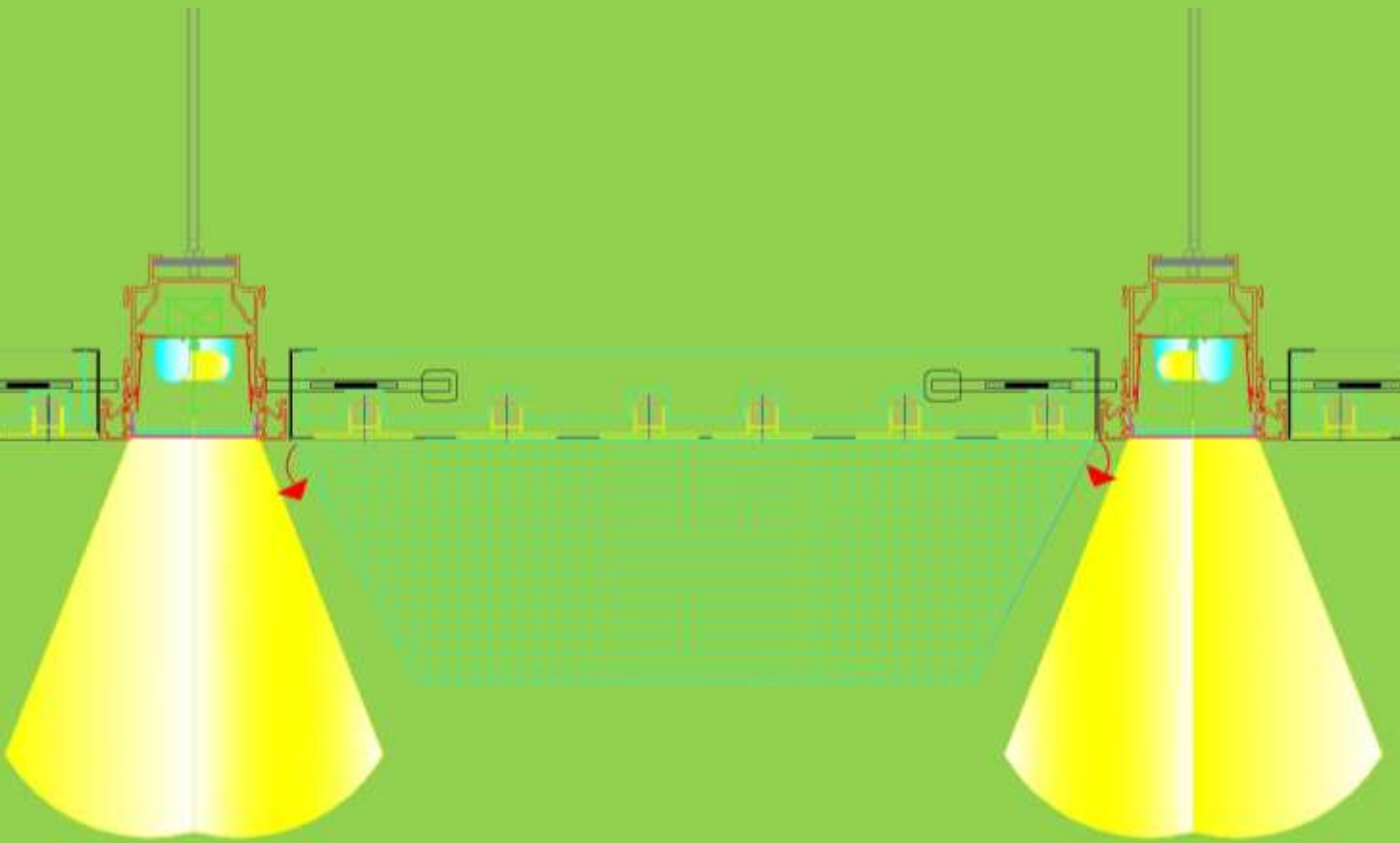
- A. GX multifunction top track
- B. LED or fluorescent luminaire
- C. micro-prismatic optic
- D. ACV2 accessory for metal panels
- E. top track hanging bracket



GXLed

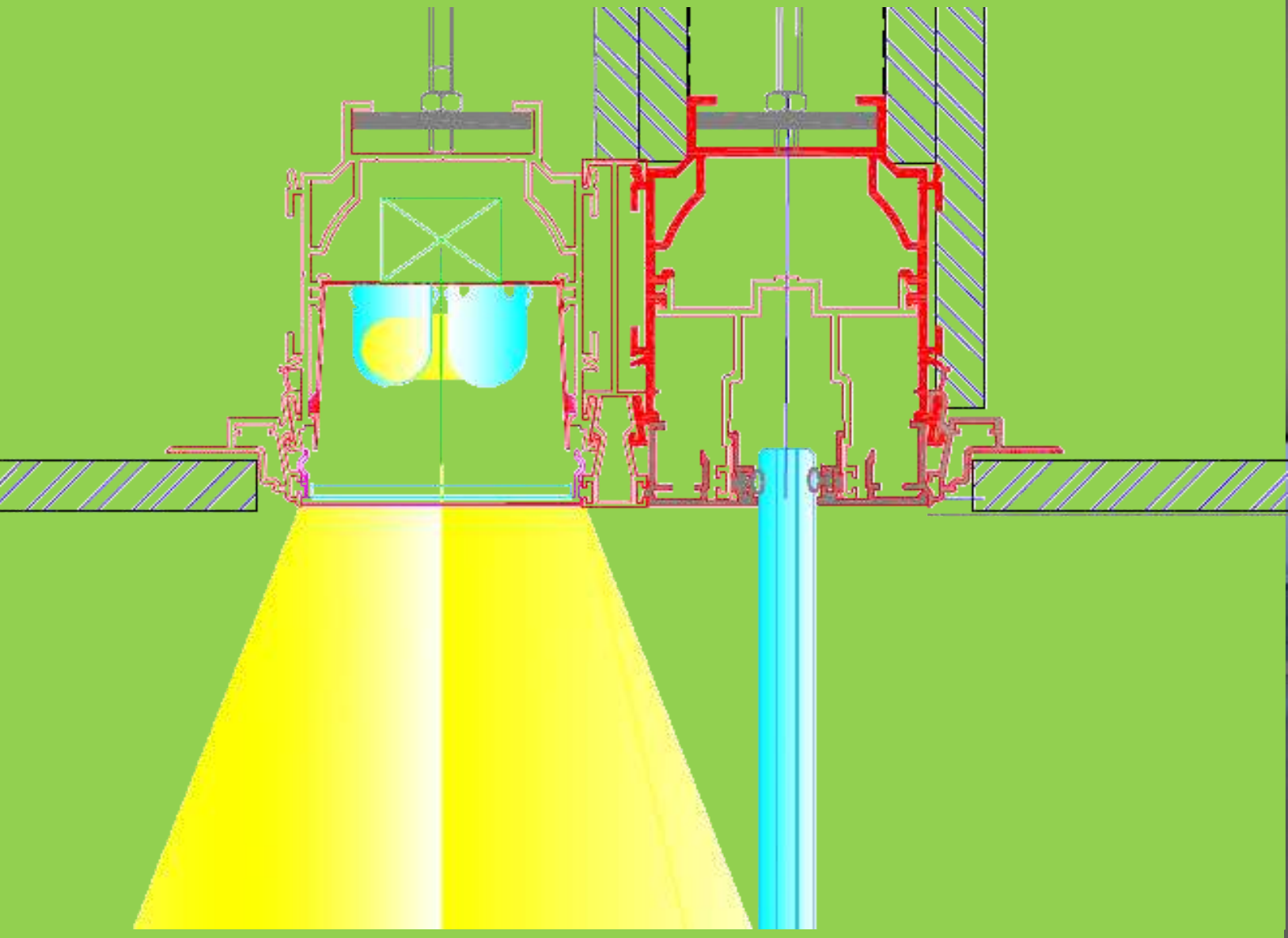


2.1 Example of continuous row luminaires GXL



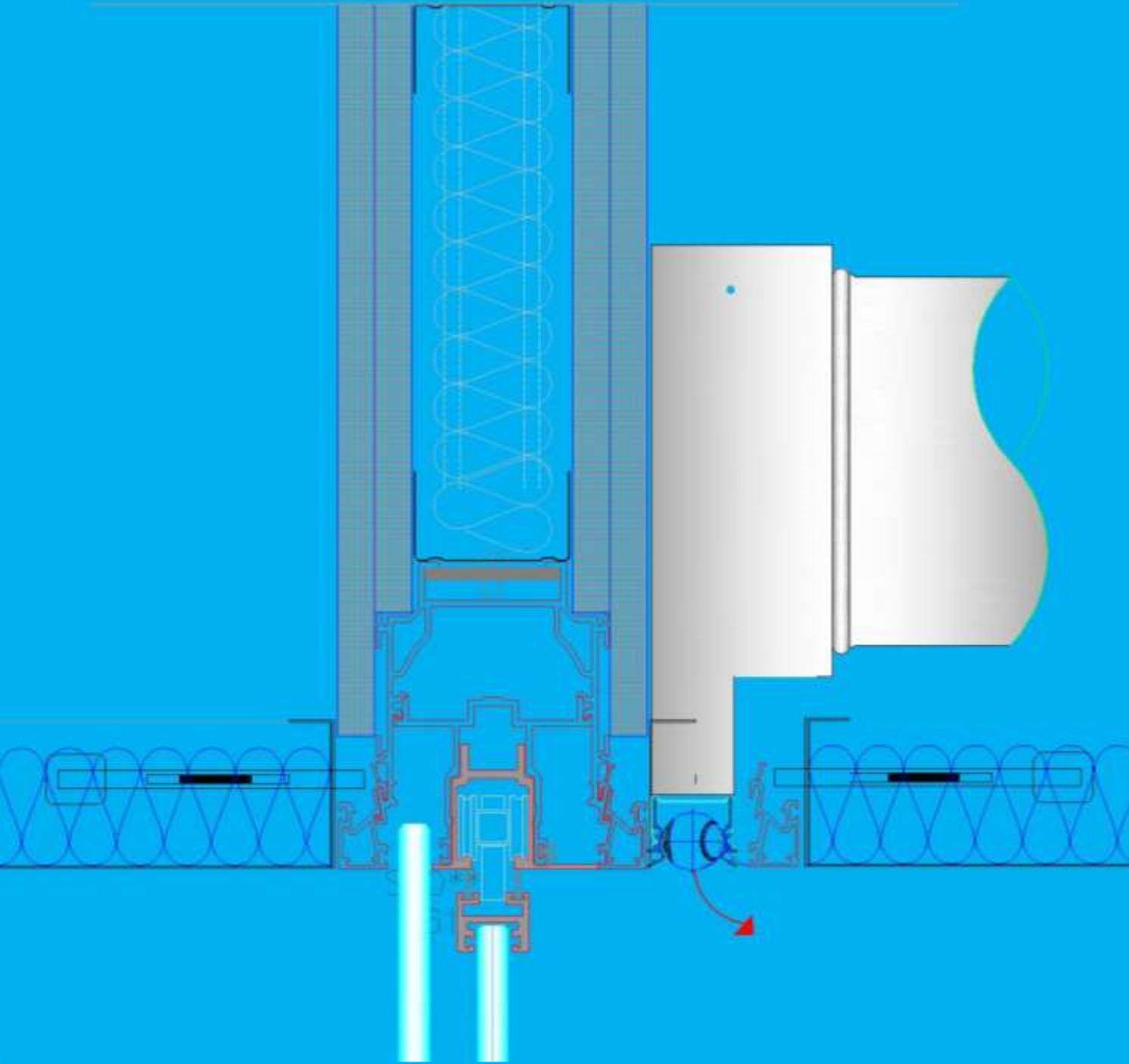
- Technogym Village: 6.500 sqm. Metal ceiling with 2.400 GXL luminaires

2.2 Example of GXL continuous row luminaires with additional top track for GX1 integrated glass wall.



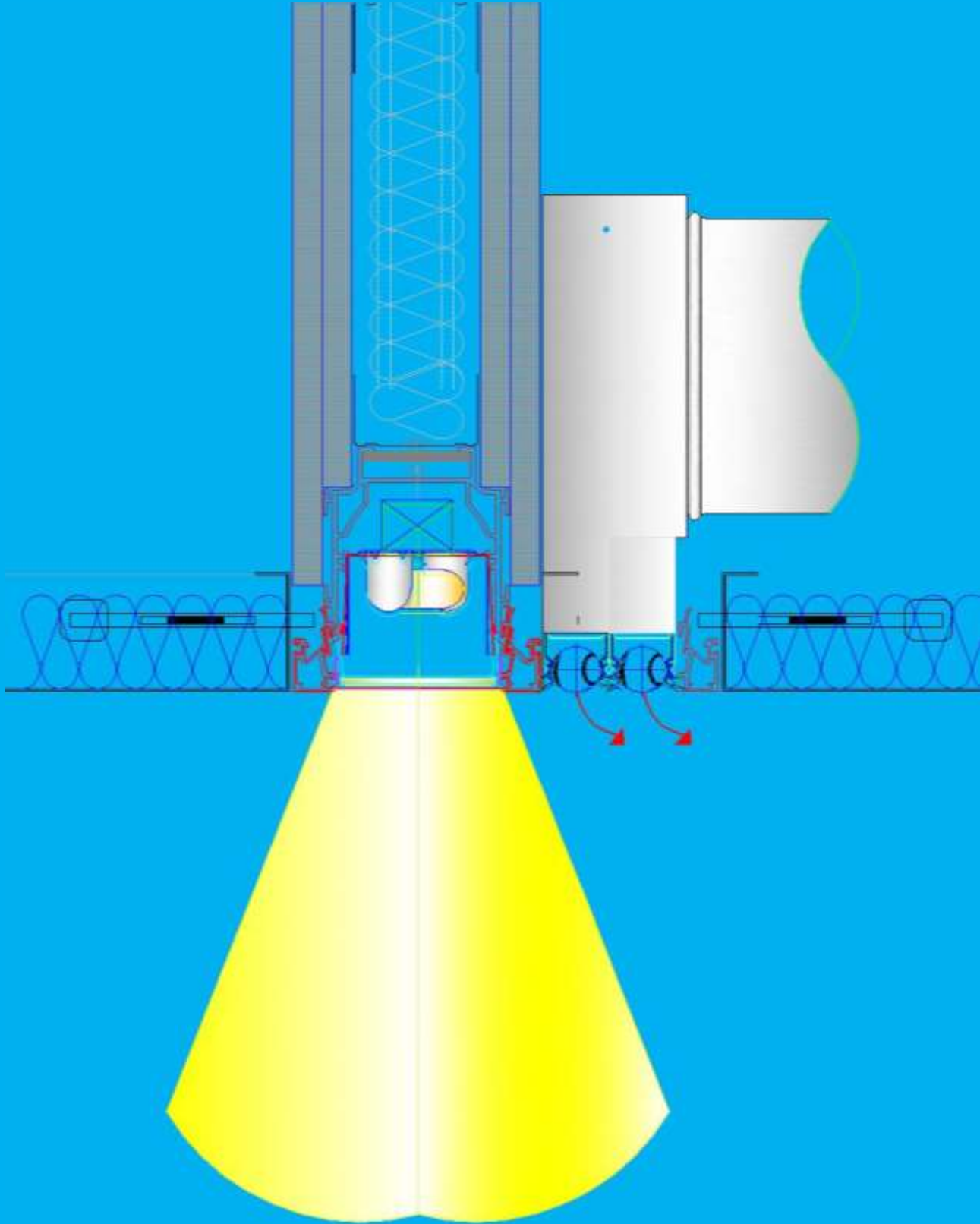
- 'UNOX' project –Italy-
- 1.500 sqm GX1 glass walls
- 1.200 GXL dimmerable luminaires

3. LTG linear diffusers



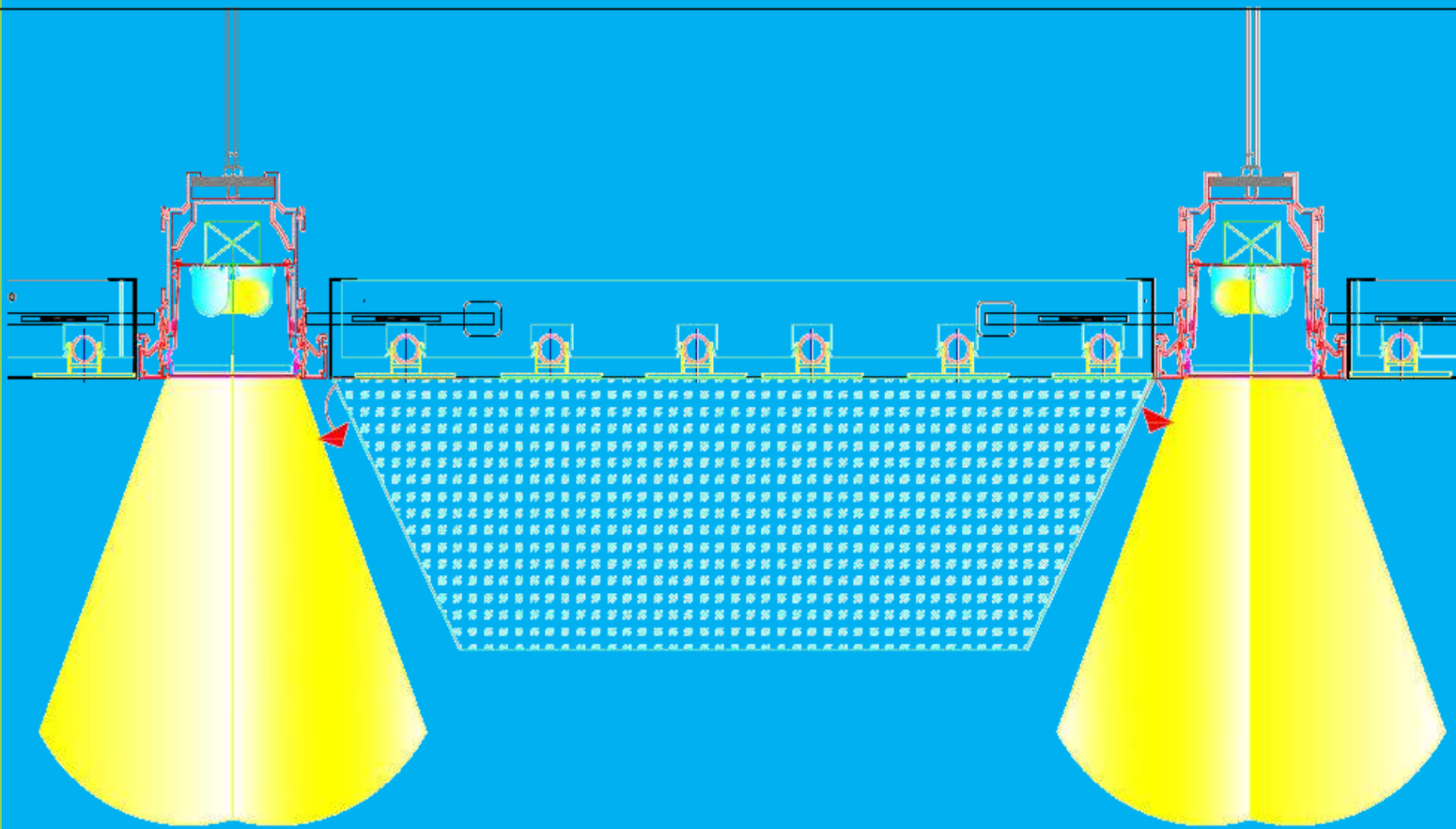
- single linear diffuser integrated to the top track and gypsum sound barrier

3.1 LTG linear diffuser



- linear diffuser integrated to the top track, in open air.

3.2 Zent- Frenger radiant system



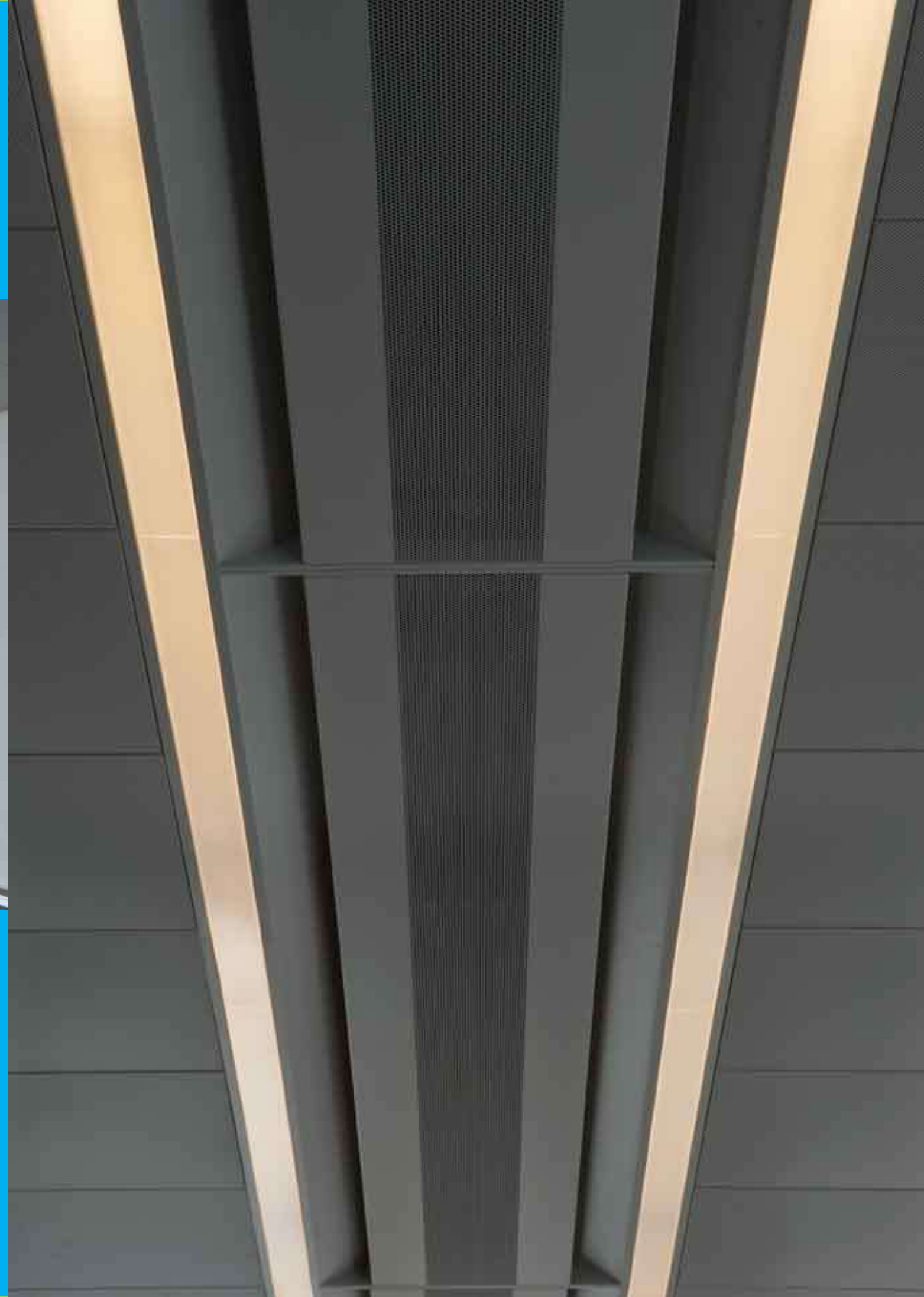
- Zent- Frenger radiant system with copper pipes applied to metal panels by magnets.
- Metal panels fully independent
- High performances (95W/sqm) thanks to glueing free pipes coupling



3.3 Example of servicing the radiant system; metal panels are fully openable on pivots acting on the GX top track

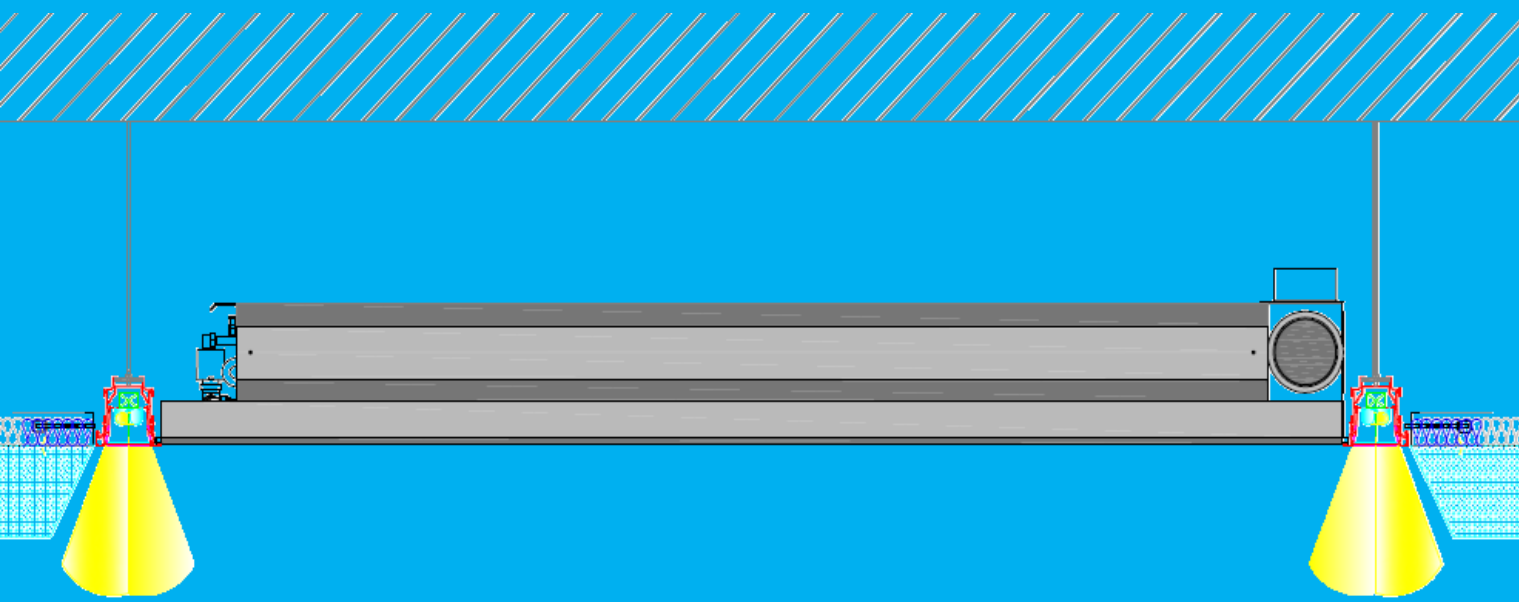


3.4 Chilled beam system



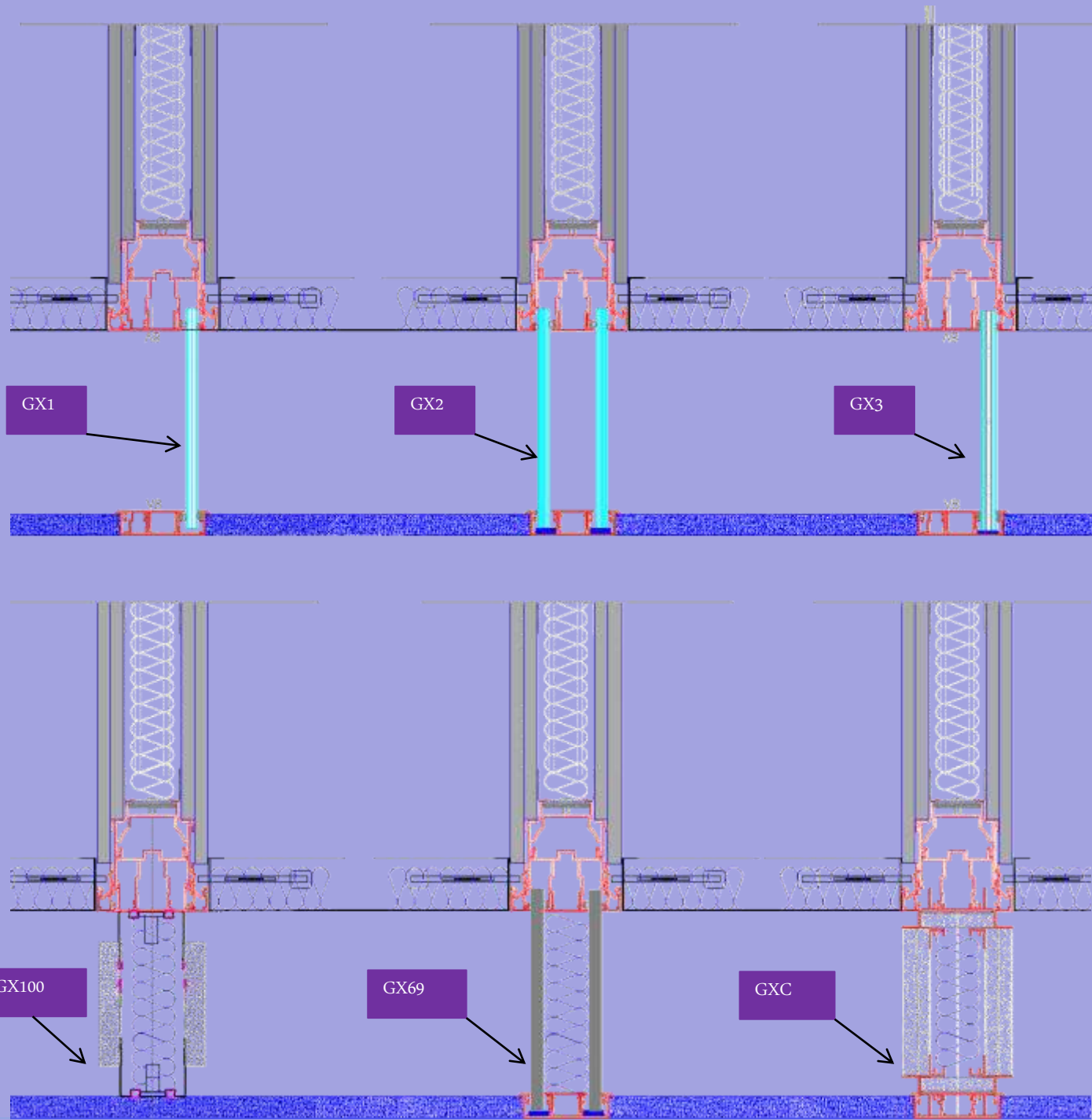
- Example of integrated chilled beam and integrated luminaires

3.5 Chilled beam cooling system.



- Chilled beam .
- Fully independent installation from ceiling panels.
- Connections and service independently feasible

4. Walls series GX1-GX2-GX3



- GX1 Single glazed wall with laminated glass 6.6.1 (12 mm) mm thickness
- GX2 Double glazed wall with laminated glass 5.5.1/ 49 / 5.5.1 (69 mm) mm overall thickness
- GX3 Single glazed wall with laminated glass 4.5.4.2 (14mm.) mm thickness
- GX100 Solid wall with 60mm thick internal structure and 2x 18 mm thick solid panels (100mm) overall thickness
- GX 69 Solid wall with 45mm thick internal structure and 2x 12 mm solid panels (69mm) overall thickness
- GXC Solid wall with 50 mm thick internal structure and 2x 12 mm gypsum panels (100mm) overall thickness

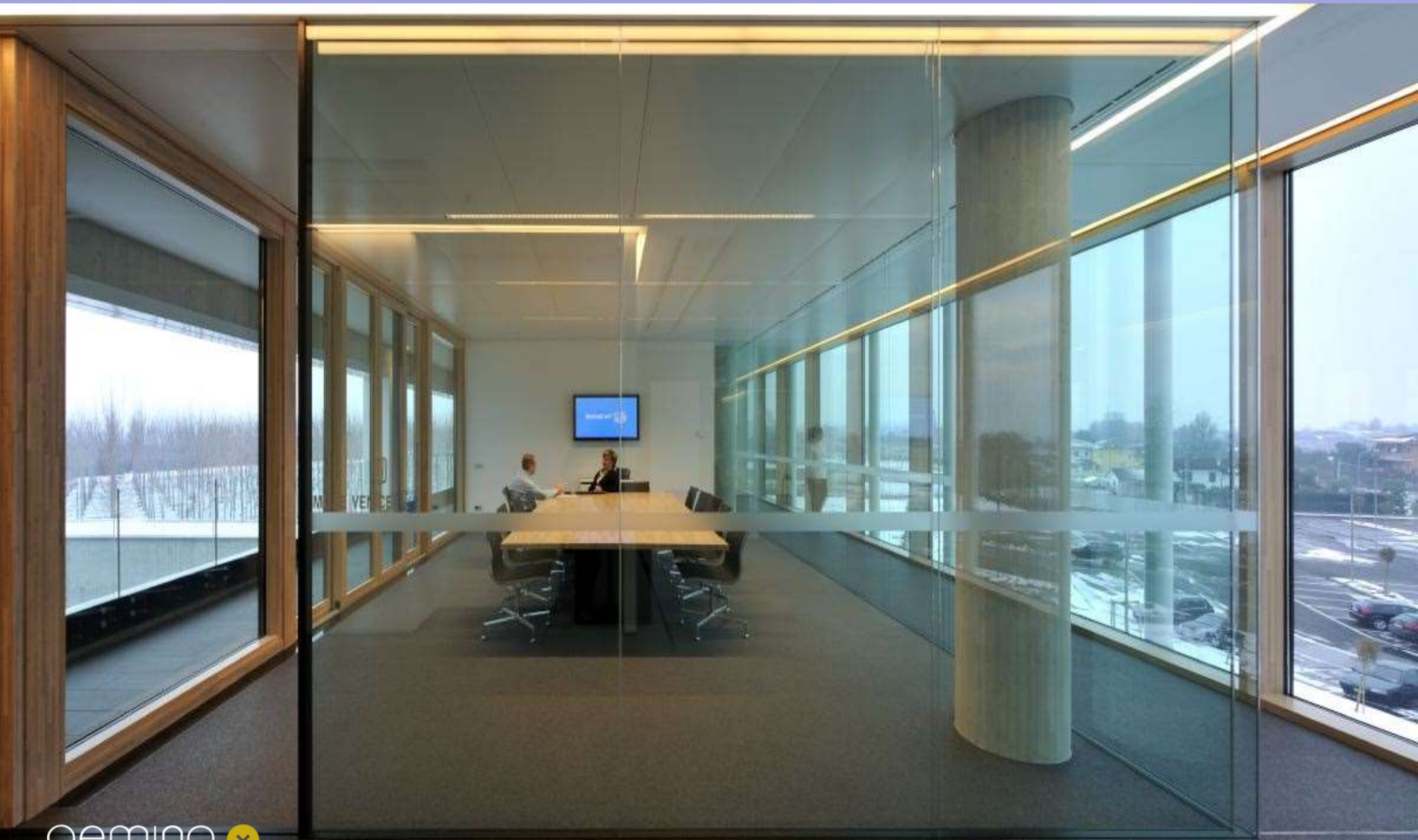
Reference: ITCLAb (BG) 2.400 sqm of GX2 double glazed wall ; low iron and vertical aluminum internal profiles.



Reference: *Technogym Village (FO)* 4.800 sqm of GX1 single glazed wall + 140 DS sliding doors with soft closer



Referenzce: Simem (VR) 2.200 sqm GX1+ GX2 of integrated single and double glazed walls; GXmetal ceiling + GXL luminaires



Reference: Acer Computer Lugano (CH) 1.800 sqm of GX!1 + GX2 walls



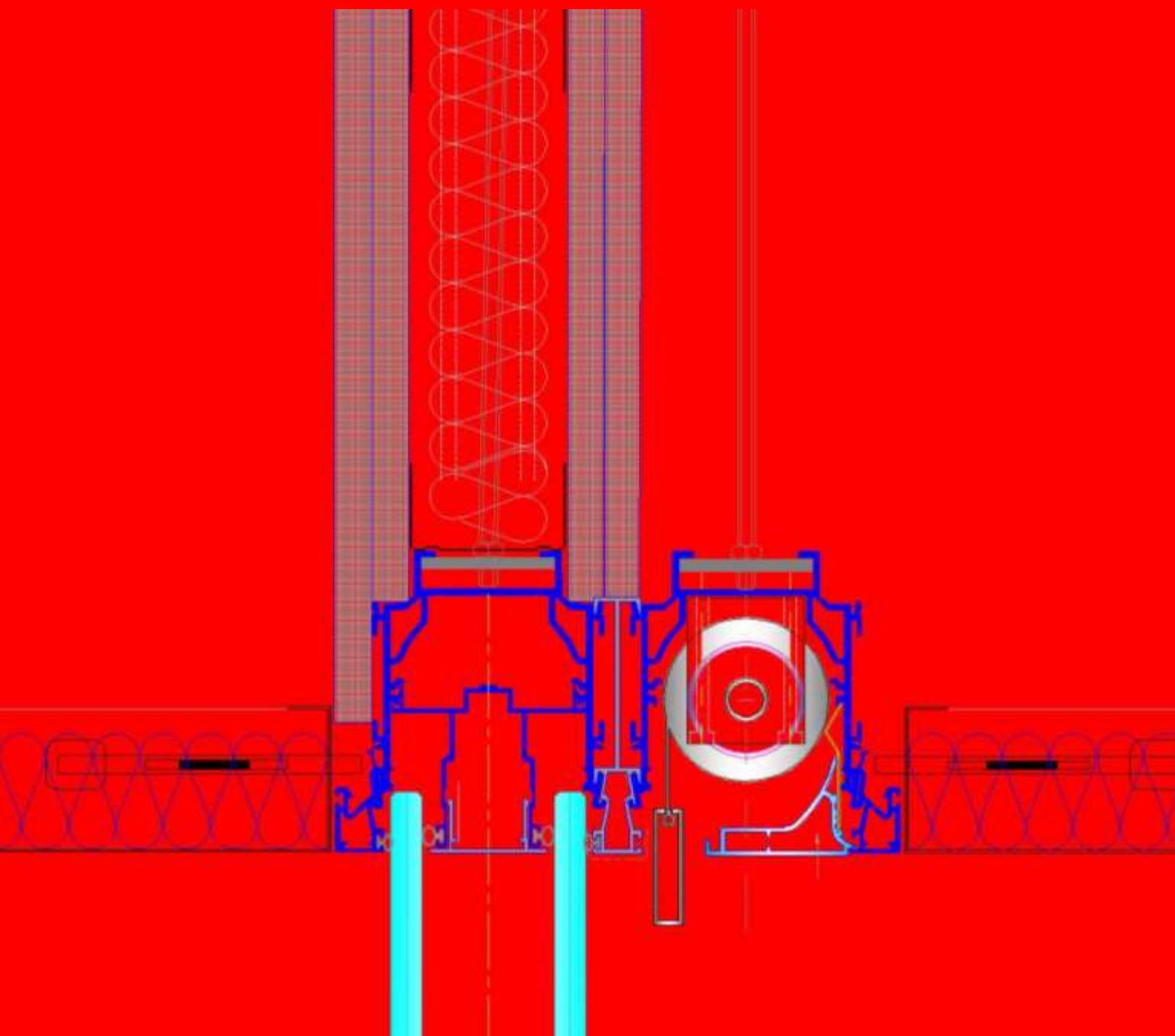
Referenza: UNOX S.p.a. (PD) 1.800 sqm of GX1+ GX2 integrated walls, gypsum and metal ceiling + luminaires



Referenza: MTA S.p.a. (RE-italy) 1.600 sqm of GX1+ GX2 integrated walls, gypsum and metal ceiling + luminaires



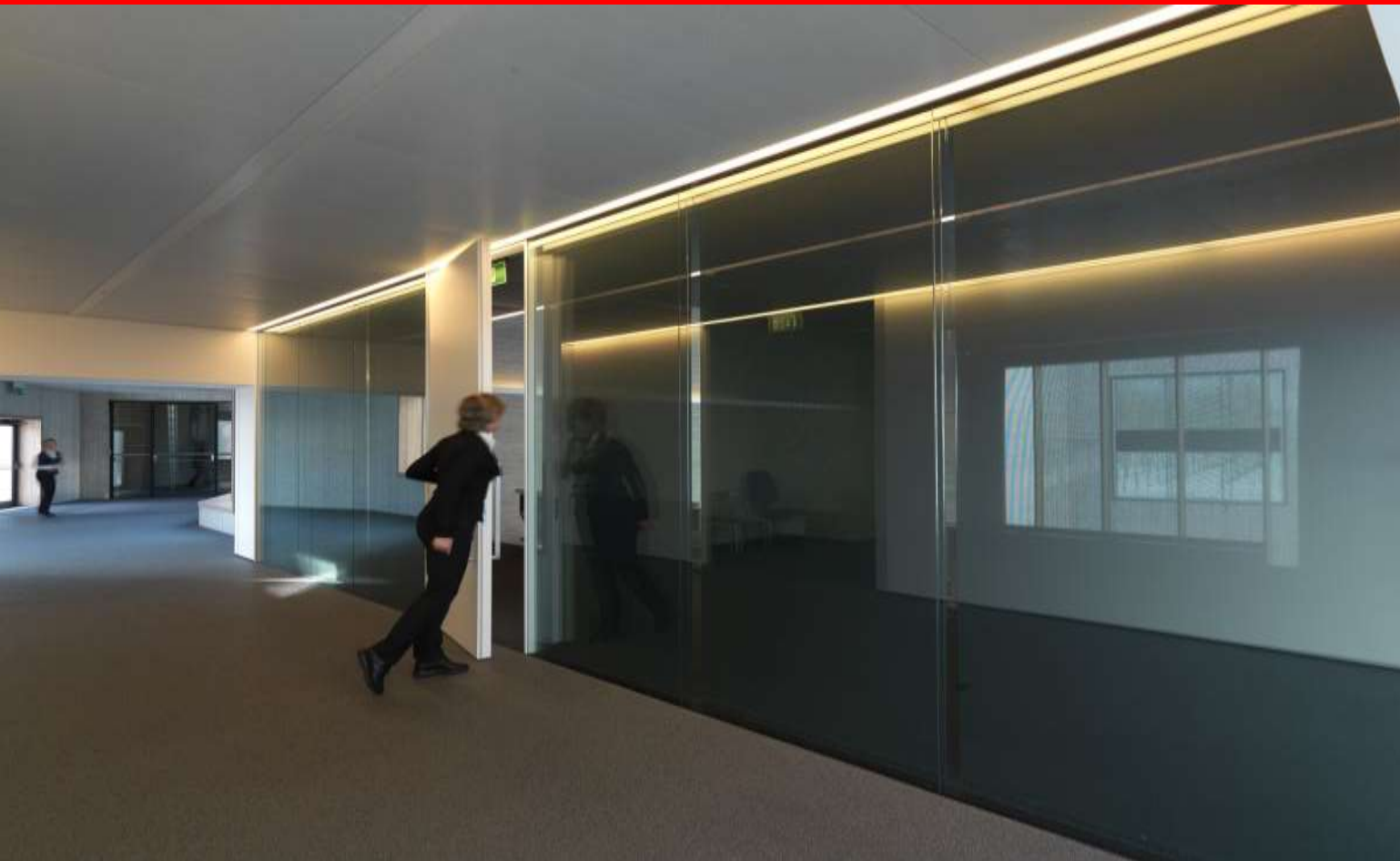
5. GXR rolling blinds



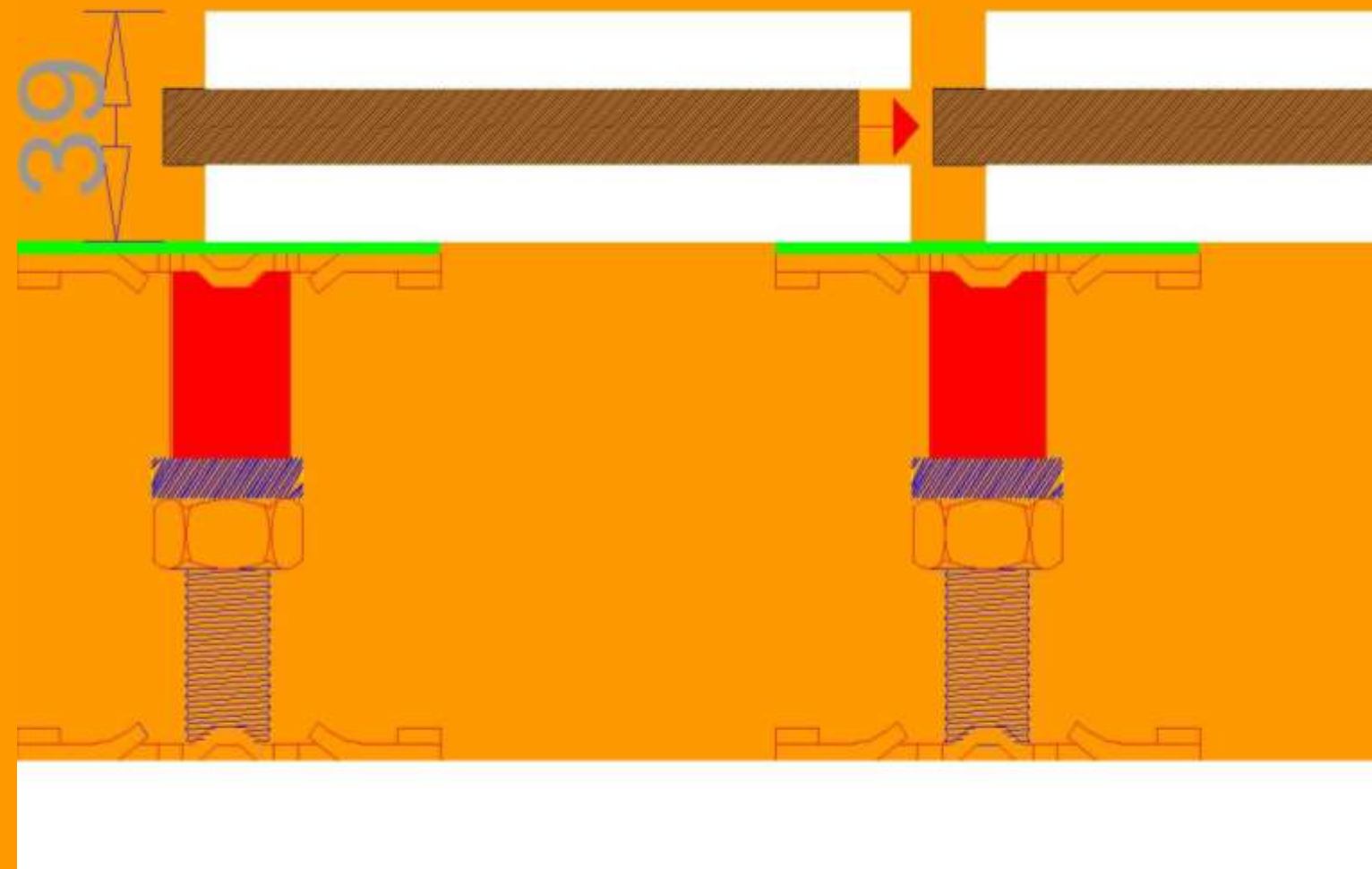
- Integrated blinds into GX top track
- Aluminum bar 40 mm diam
- Manual or motorized mechanism (Somfy)
- Extensive selection of fabrics available upto 3400 mm.



Reference SIMEM S.p.a. GXR integrated motorized rolling blinds



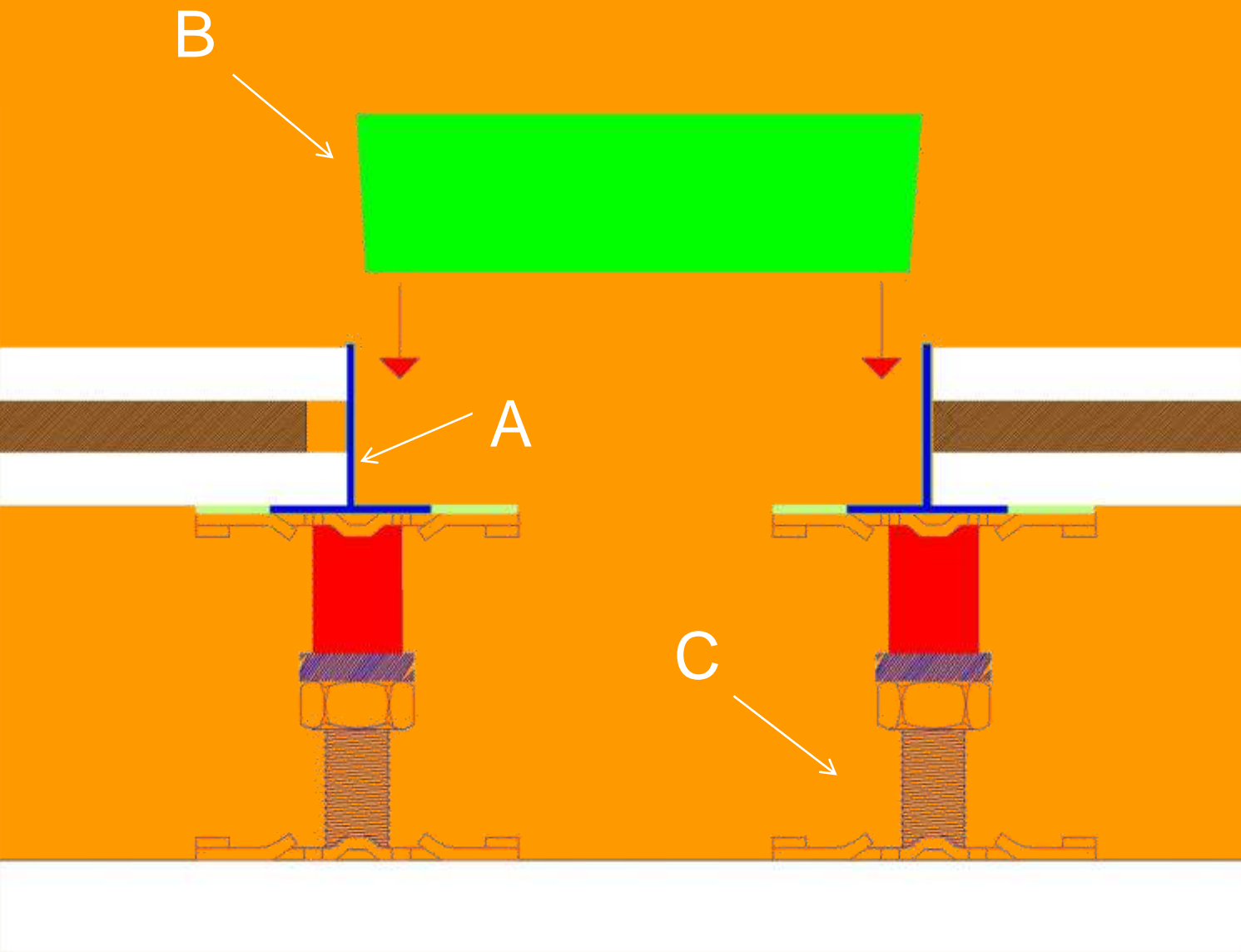
6. GXF Hollow Floor



- Gypsfibre panel 39 mm thick, made with three layers hp bonded;
- *“male-female” connection between panels*
- Accessible door traps for underfloor inspection
- Floor radiant heating available
- Steel supporting substructure from 80 to 700 mm high

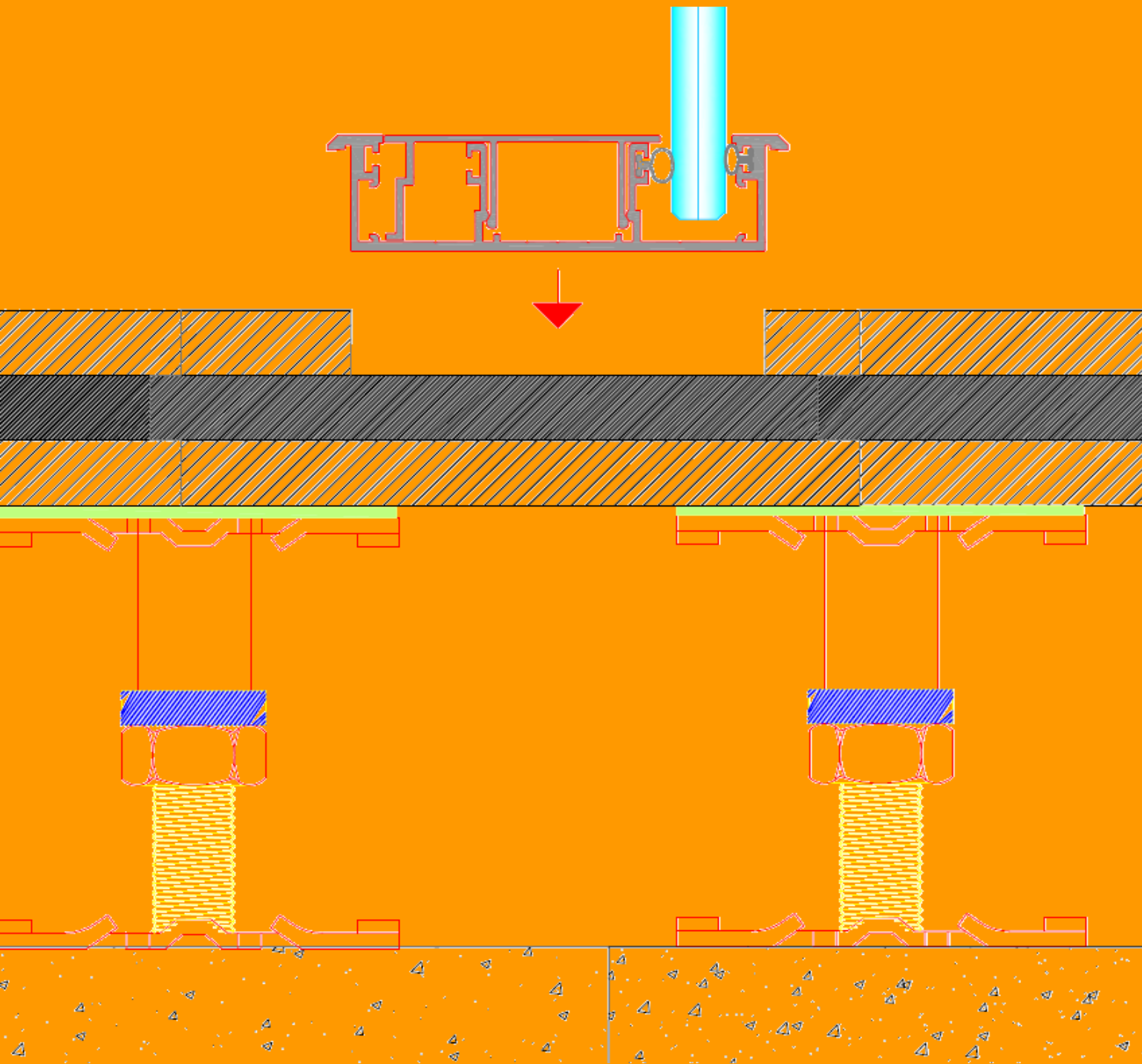


6.1 Under floor services distribution



- A. "T" profiles for panels alignment and edge protection
- B. Accessible panel 600x600 and - 600x1200 mm
- C. Steel pedestal on 500x500 mm. grid

6.3 for integrating the wall bottom profile easily remove the first top layer.



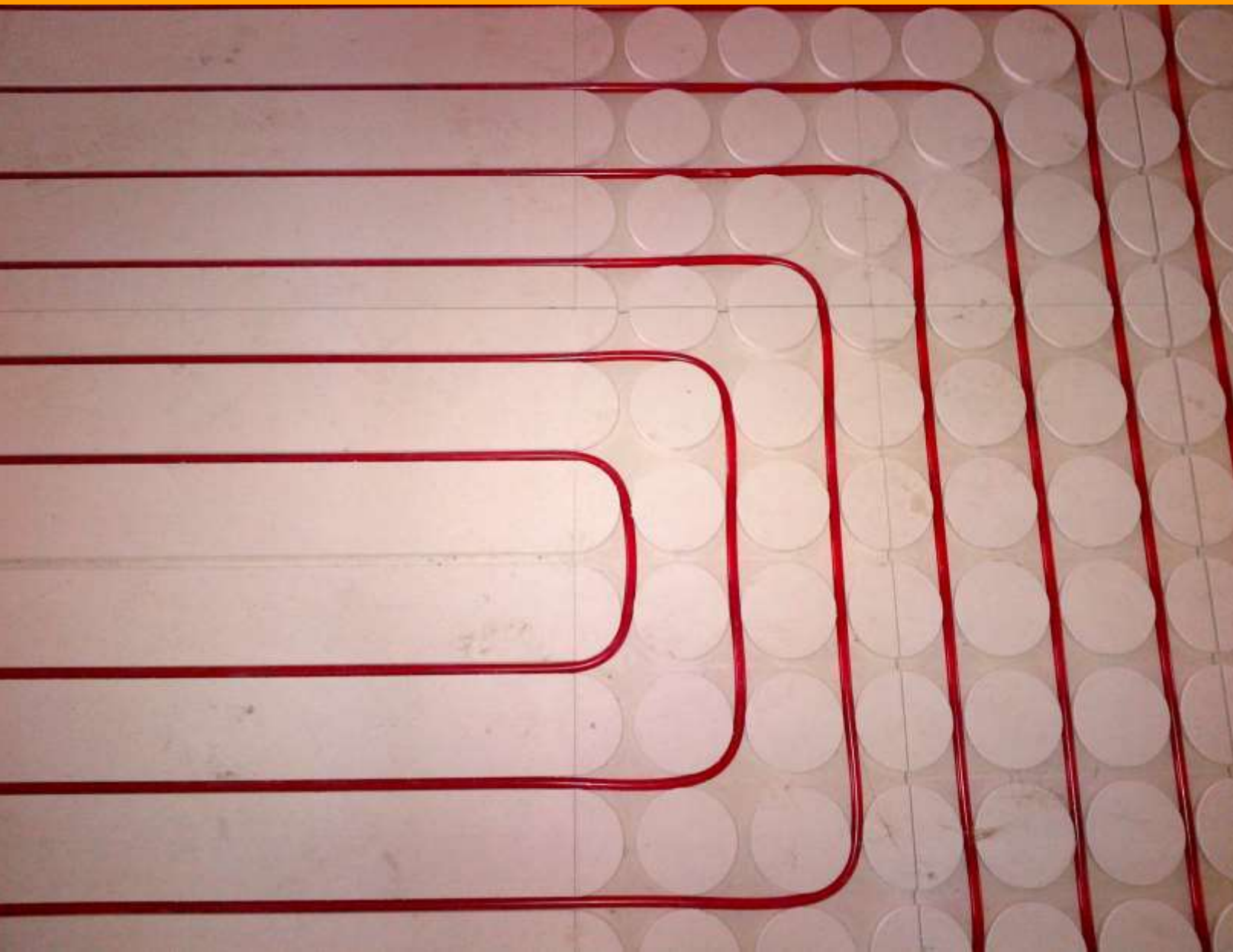
6.4 Example of electrical service distribution



accessible panel for local electrical outlet



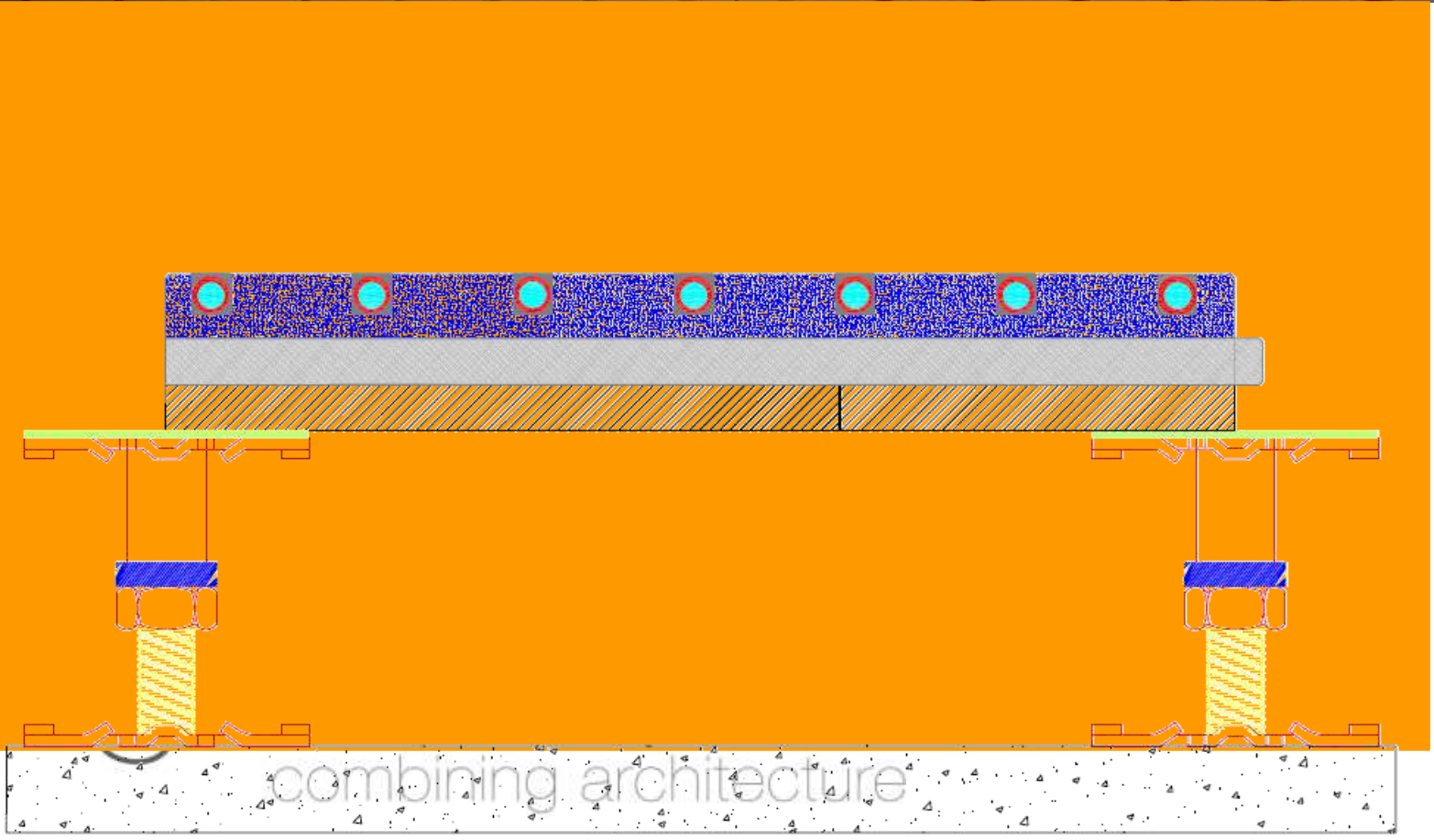
6.5 hollow floor radian system:



- Grooved panels for running pipes diam. 10/14 mm.
- Self levelling for filling the grooves
- Additional gyps fiber panel 12,5 mm thick to close.
- Overall panel thickness 50/55mm.



Other examples:



Reference: SIMEM S.p.a. 3.400 sqm GXL raised floor with resin to finish



with Reference: ARAG (VR) GXF raised floor h veneer top finish



world references

- Foster + Partners Office London, UK Foster + Partners
- American University Beirut, London Zaha Hadid
- Italcementi Milan, Italy Richard Maier
- Luna Rossa Valencia, Spain Renzo Piano
- Technogym Cesena, Italy Antnio Citterio and Partners
- David Yurman New York, USA Design Republic
- Ime New York, USA Gensler
- Acer HQ Lugano, CH Studio Coima
- Holcom Group Beirut, Lebanon Lombardini 22
- Faconable New York, USA Callison
- FLOS Brescia, Italy LPA Architects
- PBZ Banka Zagreb, Croazia Zona A
- Sandler O' Neils New York, USA Mancini Duffy
- Yahoo Milan, Italy Dalloli Architecture
- Geller New York, USA Studios Architecture
- Prada San Francisco, USA Technical Office
- Gucci Milan, Italy Geniusloci
- Odebreth San Paolo, Brazil Studios Anna Costa
- Disney Paris, France RBS Group Italy